

F E N W A Y



H E A L T H

Celebrating AANHPI Heritage Month

Highlighting AANHPI queer voices and experiences

1

Understanding AANHPI Identity

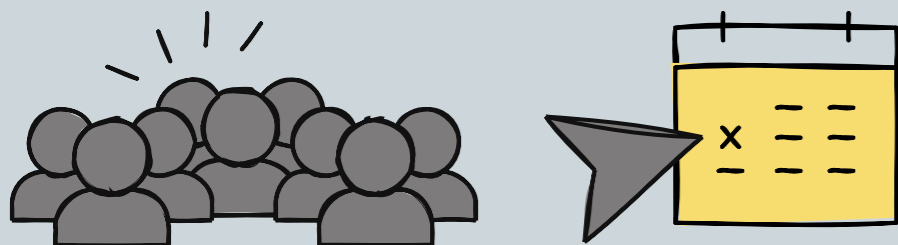
The AANHPI identity encompasses diverse cultures and histories, representing a wide range of Asian American, Native Hawaiian, and Pacific Islander communities. Each culture contributes unique experiences and perspectives to the broader spectrum of identity, particularly in the context of sexuality and gender.



2

Intersectionality Matters

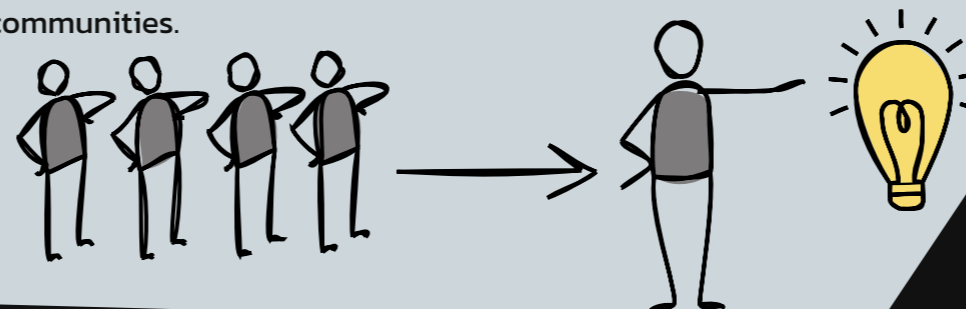
Intersectionality emphasizes that multiple identities affect experiences. Understanding this helps in recognizing how AANHPI LGBTQ+ individuals navigate societal challenges, including racism, discrimination, and cultural expectations, blending their Asian heritage with sexual orientation to form unique identities.



3

Importance of Representation

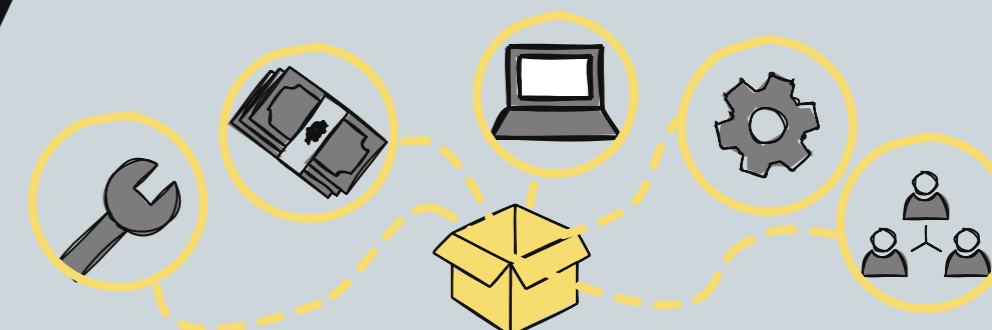
Representation in media and leadership is essential for AANHPI LGBTQ+ individuals. Seeing characters or leaders who share similar backgrounds can validate experiences, foster pride, and encourage younger generations to embrace their identity, ultimately promoting diversity and acceptance across communities.



4

Community Support Systems

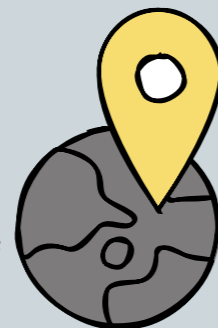
Building support systems within AANHPI communities is vital. LGBTQ+ AANHPI individuals often face cultural stigmas, so creating safe spaces for dialogue, mentorship, and connection can foster resilience and reinforce a sense of belonging among members of these intersecting communities.



5

Cultural Celebrations

Cultural celebrations during AANHPI Heritage Month allow for the acknowledgment of diversity within communities. Events showcasing music, dance, and art can highlight the intersection of queer identities while honoring traditional heritage, reinforcing pride and visibility for AANHPI LGBTQ+ individuals.



6

Educational Initiatives

Educational initiatives can foster understanding and allyship. By providing workshops or discussions about the AANHPI queer experience, allies and community members can gain insights into cultural nuances, discrimination, and support strategies, ultimately promoting respect and inclusivity.



7

Storytelling Power

Storytelling serves as a powerful tool for healing and connection. Personal narratives shared by AANHPI LGBTQ+ individuals can inspire others, breaking down stereotypes and encouraging empathy while fostering a deeper understanding of the unique struggles faced by these communities.

